

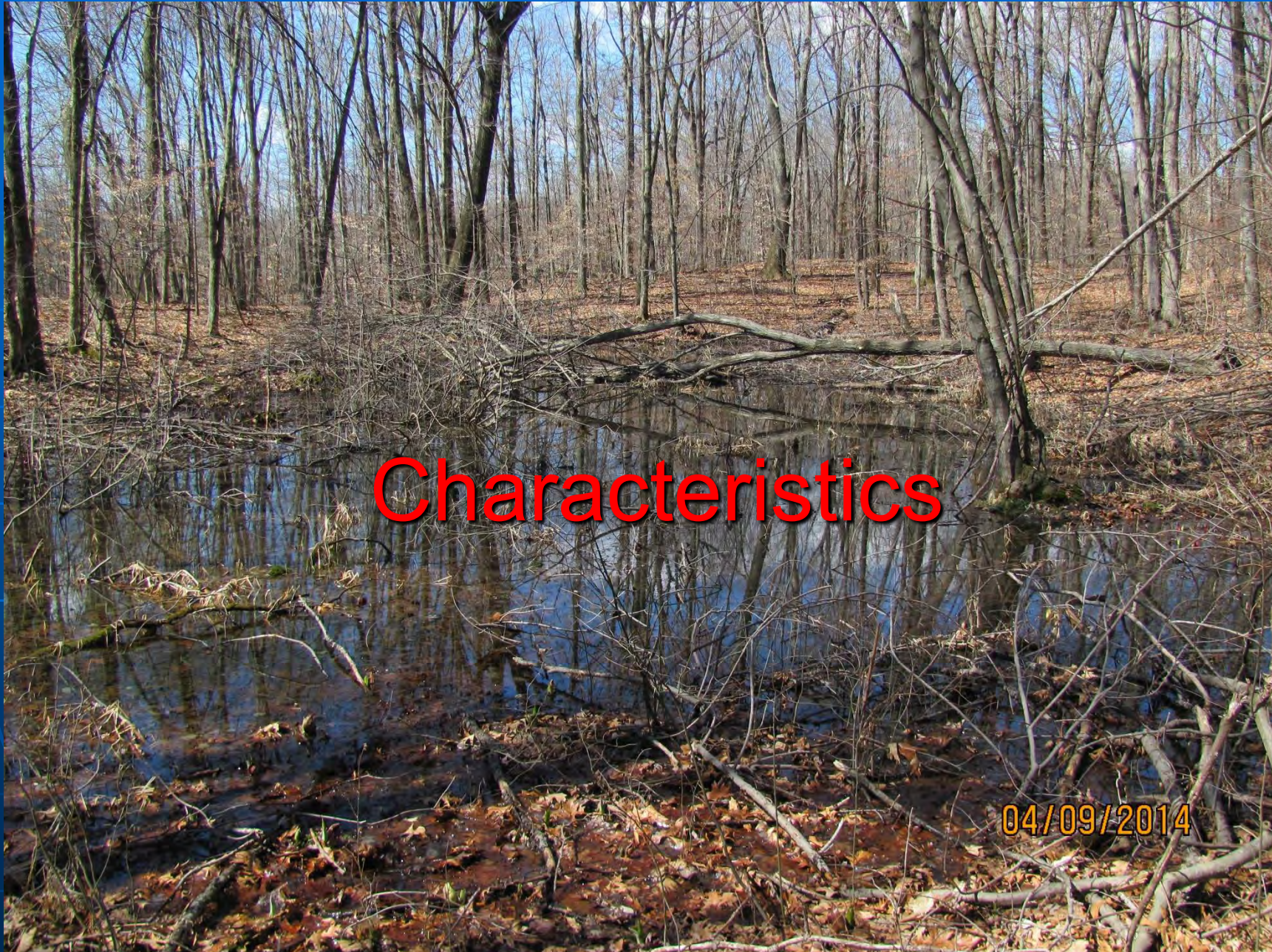
# Identifying Potential Vernal Pools

CACIWC 11-16-2024

Edward M. Pawlak, PWS







# Characteristics

04/09/2014



# 1. Confined Basin Depression With No Permanent Inlet or Outlet





A photograph of a calm pond in a forest. The water is still, creating clear reflections of the surrounding trees and branches. The trees are mostly bare, suggesting a late autumn or winter setting. The ground around the pond is covered with fallen leaves. A red text overlay is positioned in the lower half of the image.

2. Seasonally Flooded for Several Months ..





... and Dry for the Rest of the Year



### 3. No Permanent Finfish Population











Spotted Salamander







Diploid Blue-Spotted Salamander (State Endangered)





Jefferson Salamander "Complex" (State Species of Special Concern)





Marbled Salamander





Wood Frog







Eastern Spadefoot Toad (State Endangered)





Fairy Shrimp



## 6. Pools are Used by Many Facultative Species









# 1. Pool-Breeding Amphibians ...



breed here ...



... but live here most of the year



## 2. Vernal Pool Amphibians Migrate Long Distances to and from a Breeding Pool





410 foot "salamander life zone"  
(Faccio)

Range: 334-1,115'  
Median: 554' (Baldwin et al.  
2006)







## **The Farmington Valley Biodiversity Project**

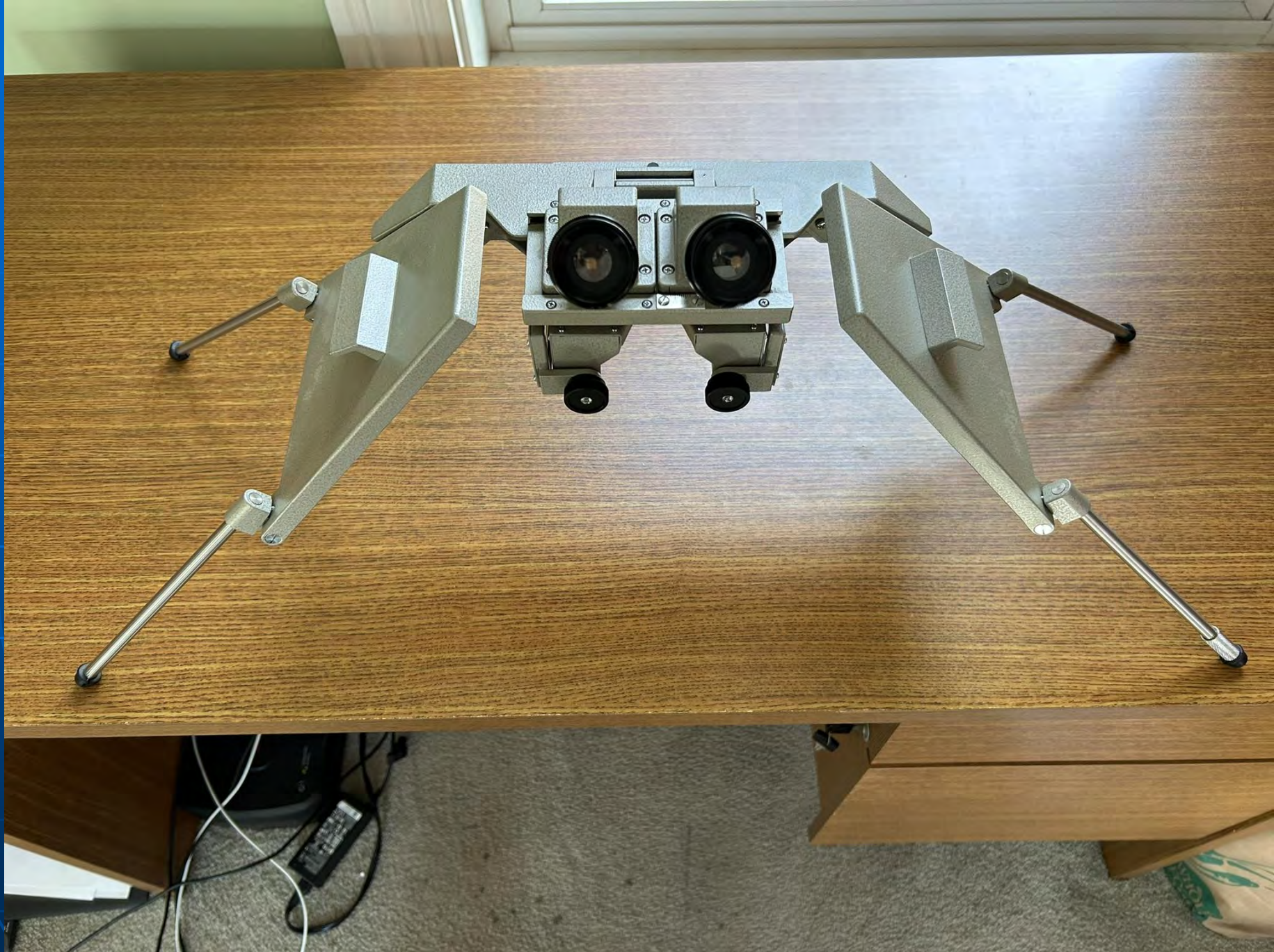


**A Model for Intermunicipal  
Biodiversity Planning in Connecticut**

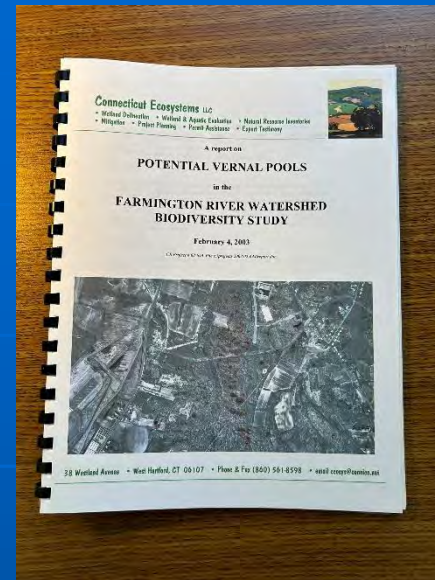
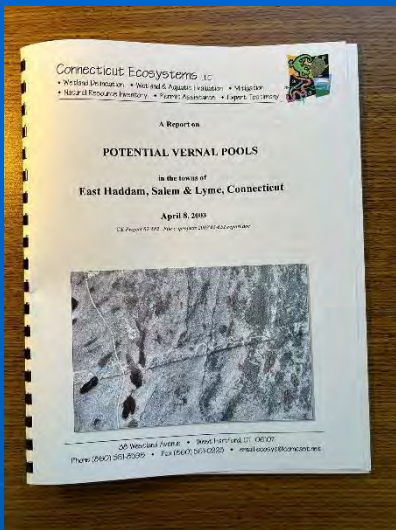






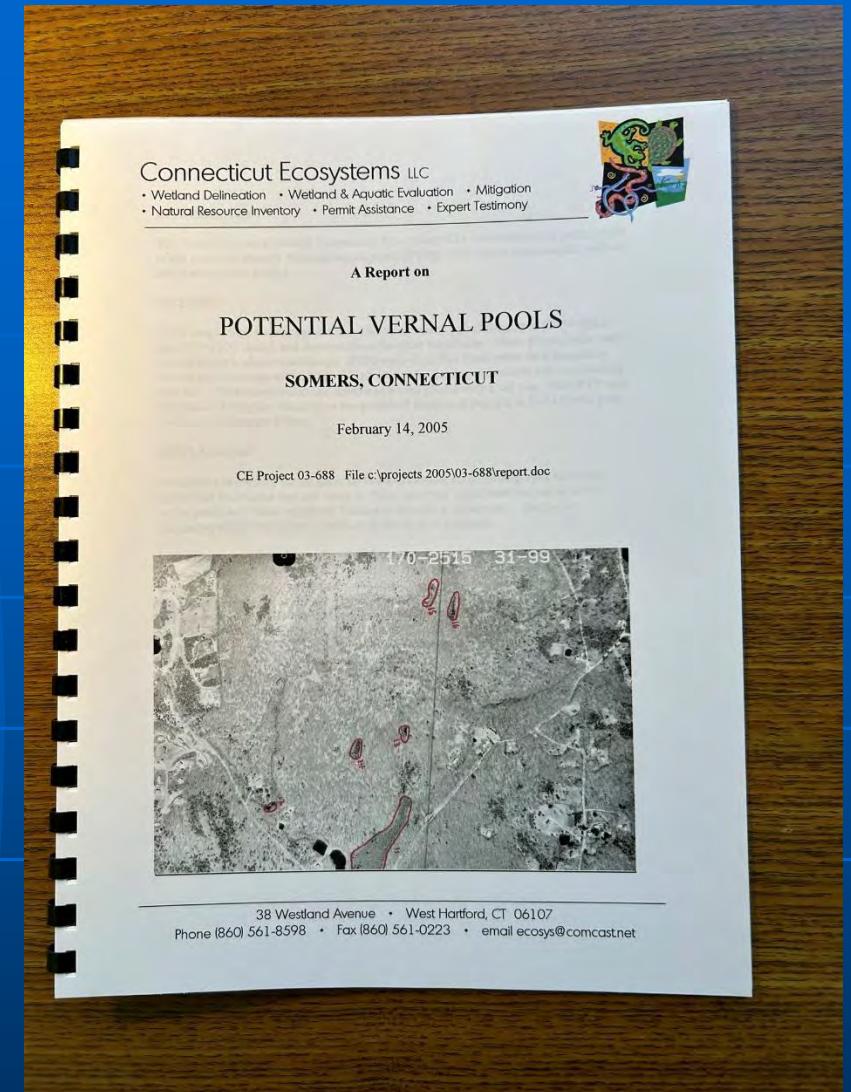






Aerial photo scale

PVP  
latitude/longitude?



Who owns the property?

How to find PVPs in situ?



















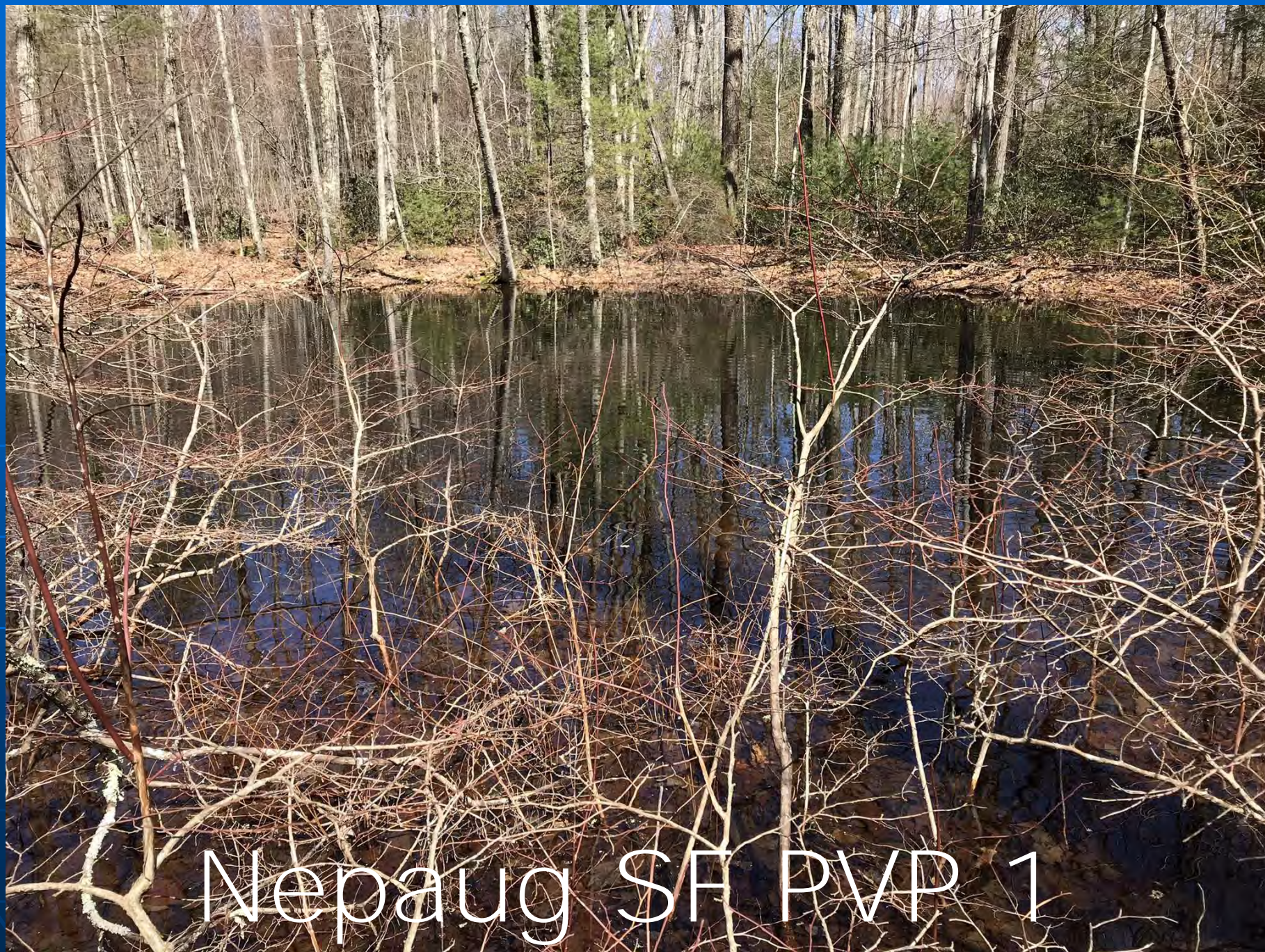


Hublein Tower









Nepaug SF PVP 1











Nepaug SF PVP 6















The smart choice for parcel data.

[Sign in](#)

[Register](#)

[Cart](#) 0



- [DATA STORE](#)
- [SOLUTIONS](#)
- [SUPPORT](#)
- [ABOUT US](#)
- [INDUSTRIES](#)
- [CONTACT US](#)

# Our Mission: To Simplify Access to Accurate Spatial Data

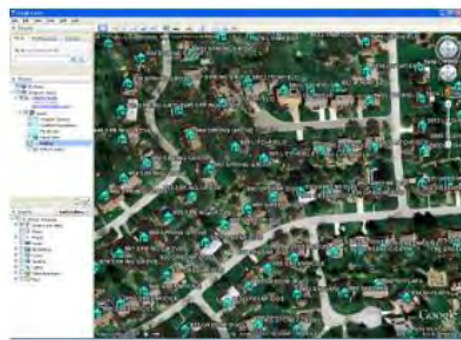
Increase productivity, gain detailed local knowledge, and make better decisions with PARLAY 2.0, a parcel data layer for Google Earth. View property lines, parcel boundaries and real estate parcel attribute data for over 158.8 million US properties. Zoom in to see the parcel boundaries and click on an icon in the center of the property line to see parcel attributes and information such as owner, address, and other details where available. Link to the detailed record on the website of the local assessor / auditor by clicking on the property parcel number. Works in any version of Google Earth.

[SIGN UP FOR OUR FREE TRIAL! →](#)

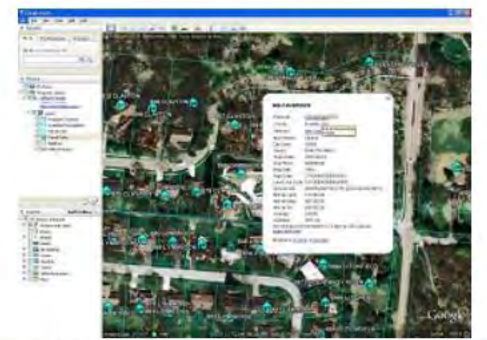
[HOW TO SUBSCRIBE →](#)

[FREQUENTLY ASKED QUESTIONS →](#)

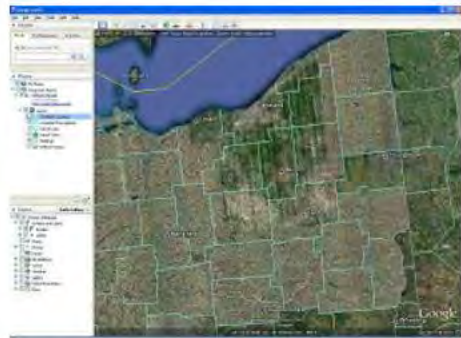
[CONTACT CUSTOMER SERVICE →](#)



Over 122.9 million building footprints are just some of the new features included in PARLAY 2.0.



PARLAY 2.0 Utilizes our link-into technology that allows one-click direct access to assessor or taxing authority online records by clicking on the parcel ID Number, now in over 800 counties.



New layers for Counties and Municipalities show you where PARLAY 2.0 has coverage when you zoom in to view parcels.



Coverage Map for over 158.8 million properties. Free Trial includes 299 Free Parcel Detail "Pop-ups" and 14 days to try out all of PARLAY's features.













An official website of New York State. [Here's how you know](#)

## Department of Environmental Conservation

Things To Do Places to Go Nature Environmental Protection Regulatory News Get Involved About

Search



# Amphibian Migrations And Road Crossings



PRINT

SHARE



TRANSLATE



Home > Nature > Waterbodies > Oceans & Estuaries > Hudson River Estuary Program > Conservation And Land Use P... > Amphibian Migrations And Ro...

### On this page

Mole Salamanders and Wood Frogs

Seasonal Migrations and Road

A new recording of the 2024 Virtual AM&RC Volunteer training is available [here](#) | [webinar transcript\(PDF\)](#).

Volunteers: Enter your 2024 data in the online form [here](#) and access instructions on Survey123 [here](#).



Search













# Hiking



AllTrails



Topo Maps+



GoPad...



TidesN...



Google...



PeakFi...



Avenza Maps



9:17

100



## Bolton vernal pool



N 41.79141° W 72.44733°



Style



Icon



Share



More

### Details

N 41.79141° W 72.44733°

 Coordinate

708 ft

 Elevation

3/27/21

 Created

10:24 AM

 Created

### Guide Me

Expand



15.96 miles 81° E

Slowly move in a circle until the arrow is pointing straight ahead.

### Photos



Add Photo

### Notes

New Note





# Summary

## Google Earth Pro

- View Historical Imagery (3/2022)
- Tilt function
- Placemarks (longitude, latitude)

## Parlay (or similar)

- Provides ownership, municipality, boundaries, etc. on Google Earth Pro

## Topo Maps+ (or similar)

- Wayfinding feature

## Roadrunning

- Direction of travel of migrating amphibians



# Contact Info

- Ed Pawlak, PWS
- 860-305-7587;  
ecosys88@gmail.com)